

RESOLUTION NO. 24 - 41
Adoption OF THE 2020 SMOOTHED URBAN AREA TRANSPORTATION
BOUNDARIES

WHEREAS , Bonner County Commissioners adopted the updated Sandpoint Urban Area Transportation Plan on July 9th 2024, which identifies projects in the Sandpoint Urban Area for Surface Transportation Program Urban Funds.

WHEREAS, The Sandpoint Urban Area includes the jurisdictions of Bonner County, Sandpoint, Dover, Kootenai and Ponderay, which collaborate to agree on a single project for funding each funding cycle.

WHEREAS, The Bonner County Area Transportation Team was tasked to refine and adjust the urban area boundaries based on the population data from the 2020 Census, as required when a new transportation plan is to be adopted.

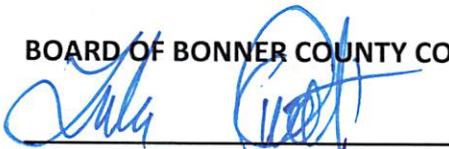
WHEREAS, The refined and adjusted boundaries, also known as “smoothed “urban area boundaries, reflect the collaborative efforts and the most recent population data to ensure accurate and effective transportation planning; and

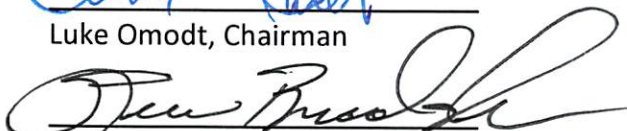
WHEREAS, Adoption of these boundaries will guide future transportation planning and project funding submissions for the Sandpoint Urban Area, ensuring alignment with the latest demographic data and regional cooperation.

NOW, THEREFORE, BE IT RESOLVED THAT: The 2020 Smoothed Urban Area Transportation Boundaries, as detailed in the attached map. Are hereby adopted by the Board of Bonner County Commissioners

The foregoing was duly enacted as a Resolution of the Board of County Commissioners of Bonner County, Idaho, on this 9th day of July 2024.

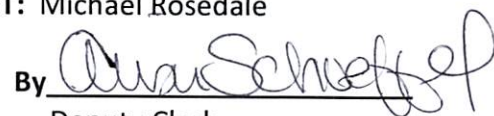
BOARD OF BONNER COUNTY COMMISSIONERS

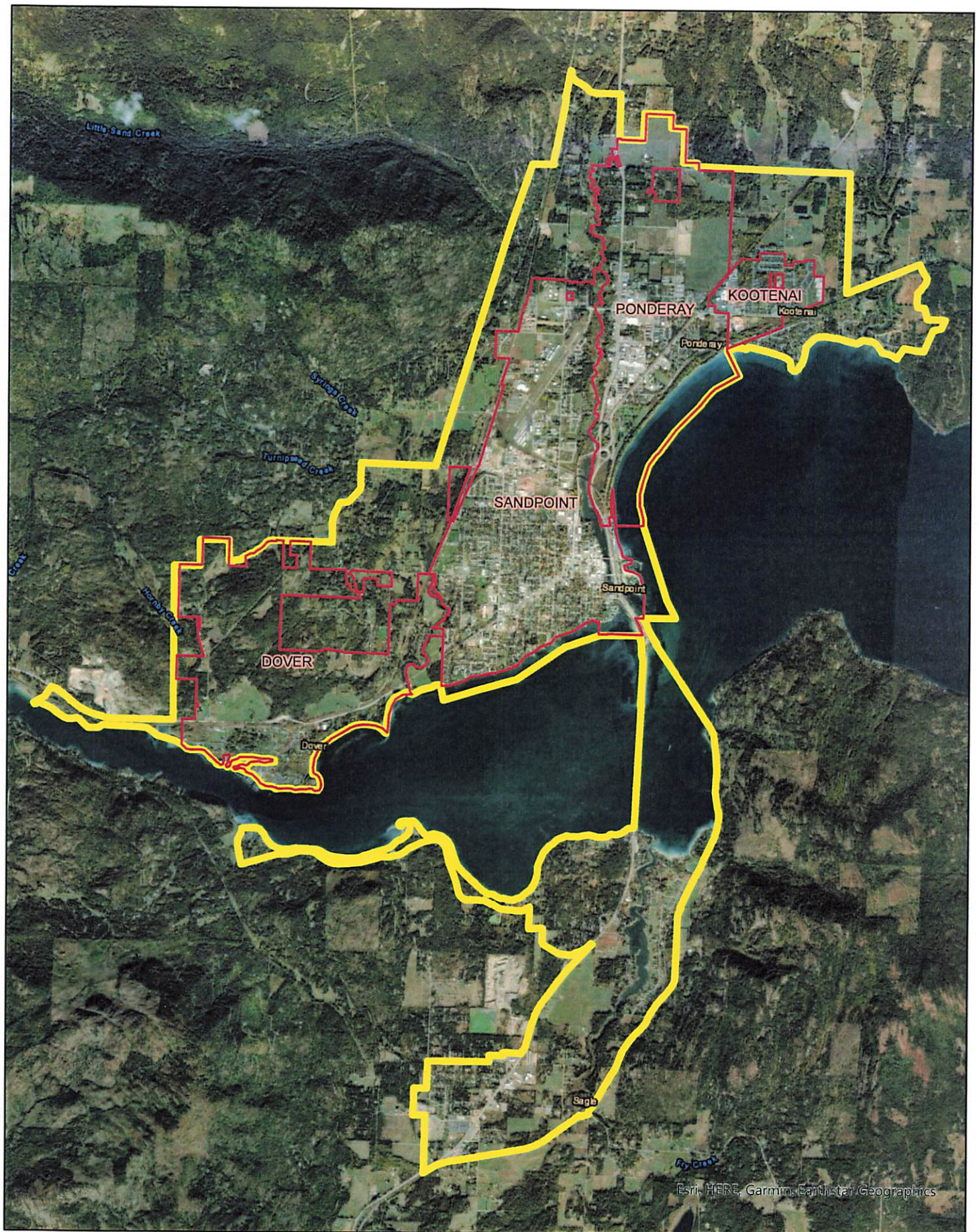

Luke Omodt, Chairman


Steven Bradshaw, Commissioner


Asia Williams, Commissioner

ATTEST: Michael Rosedale

By 
Deputy Clerk



SANDPOINT 2020
SMOOTHED URBAN
AREA BOUNDARY

- City Boundary
- Urban Area Boundary

0 0.5 1 2 Miles



Date: 1 May 2024



BONNER COUNTY ROAD & BRIDGE

1500 Highway 2, Suite 101 • Sandpoint, ID 83864 • Phone: (208) 255-5681 – Fax: (208) 263-9084
E-mail: roads@bonnercountyid.gov

July 9th, 2024

Memorandum

R&B
Item #2

To: Commissioners

From: Matt Mulder, PE Road & Bridge Staff Engineer

Re: Resolution to Update the Urban Area Map

The Road & Bridge Department has worked with the Local Highway Technical Assistance Council, Idaho Transportation Department, and the cities of Sandpoint, Dover, Kootenai, and Ponderay in a workshop to update the urban area boundaries map based on the 2020 census data. The urban area is defined by the US Census, and includes unincorporated areas within Bonner County Road & Bridge jurisdiction, including parts of Sagle, Ponder Point, and areas adjacent to the various city boundaries in the greater Sandpoint area. This defined urban area affects potential grant project eligibility as some pots of money are reserved for either urban or rural areas.

We recommend that the Board of County Commissioners formalize the attached resolution to adopt the updated boundaries of the urban area.

A suggested motion would be: **I move the Board of Bonner County Commissioners approve Resolution 24-41 adopting the updated boundaries map of the urban area.**

Recommendation Acceptance: ☒ yes ☐ no

Handwritten signature of Luke Omodt in blue ink.

date: 7/9/24

Commissioner Luke Omodt, Chair